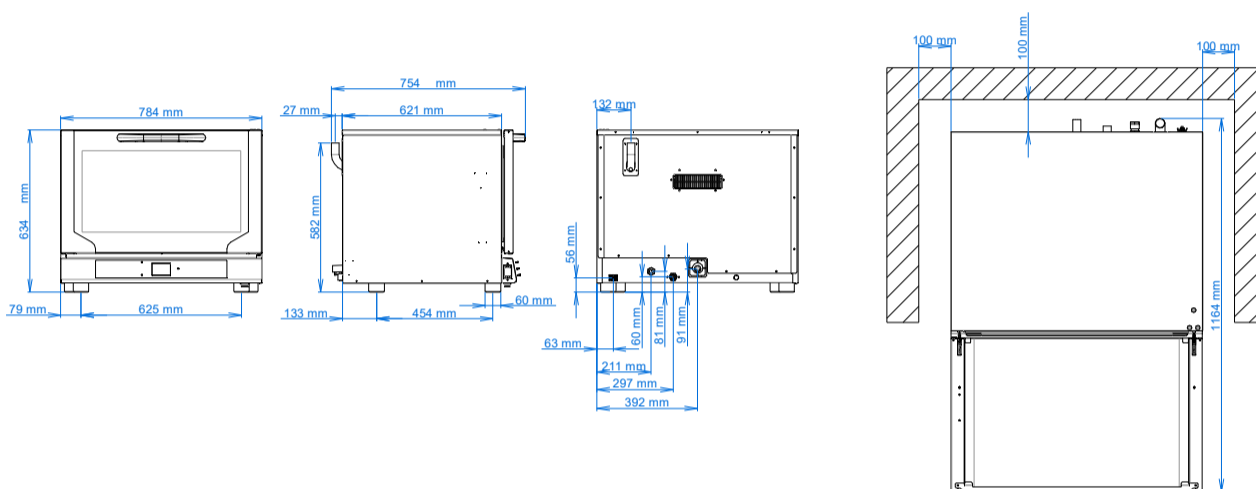


# EKF 411 NT UD



## ELECTRIC COMBI OVEN WITH TOUCH SCREEN AND DIRECT STEAM

Use: Gastronomy



DIMENSIONAL FEATURES			
Oven dimensions (WxDxH mm)	784	754	634
Oven weight (kg)	58		
Distance between rack rails (mm)	73		

ELECTRICAL FEATURES	
Power supply (kW)	6,4
Frequency (Hz)	50/60
Voltage (Volt)	AC 380/400 3N
N° of motors	2 Bidirectionals
Boiler	/
Protection against water	IPX3

EQUIPMENT			
Cardboard box dimensions (WxDxH mm)	805	830	800
Lateral supports	1 dx + 1 sx		
Cable	Three-phases+Neutral [5G 2,5] - L=1600 mm		
Manual washing set up			
USB port			

FUNCTIONAL FEATURES	
Power	Electricity
Capacity	N° 4 trays/grids 1/1 GN
Type of cooking	Ventilated
Steam	Direct steam controlled by touch screen and 10-step display [%]
Cooking chamber	AISI 304 Stainless steel
Temperature	30 - 260 °C
Temperature control	Digital probe thermometer
Control panel	Touch-Lower side
N° of programs	100
Programmable cooking steps	5
Pre-heating temperature	180 °C
Pre-heating function	Available
Programmable oven start	Available
Door	Tilt door Ventilated Inspectionable glass
Modularity	Available

PLUS	
Core probe setup (on request)	
Core probe (on request)	
Core probe support (on request)	
Wi-Fi module (on request)	