
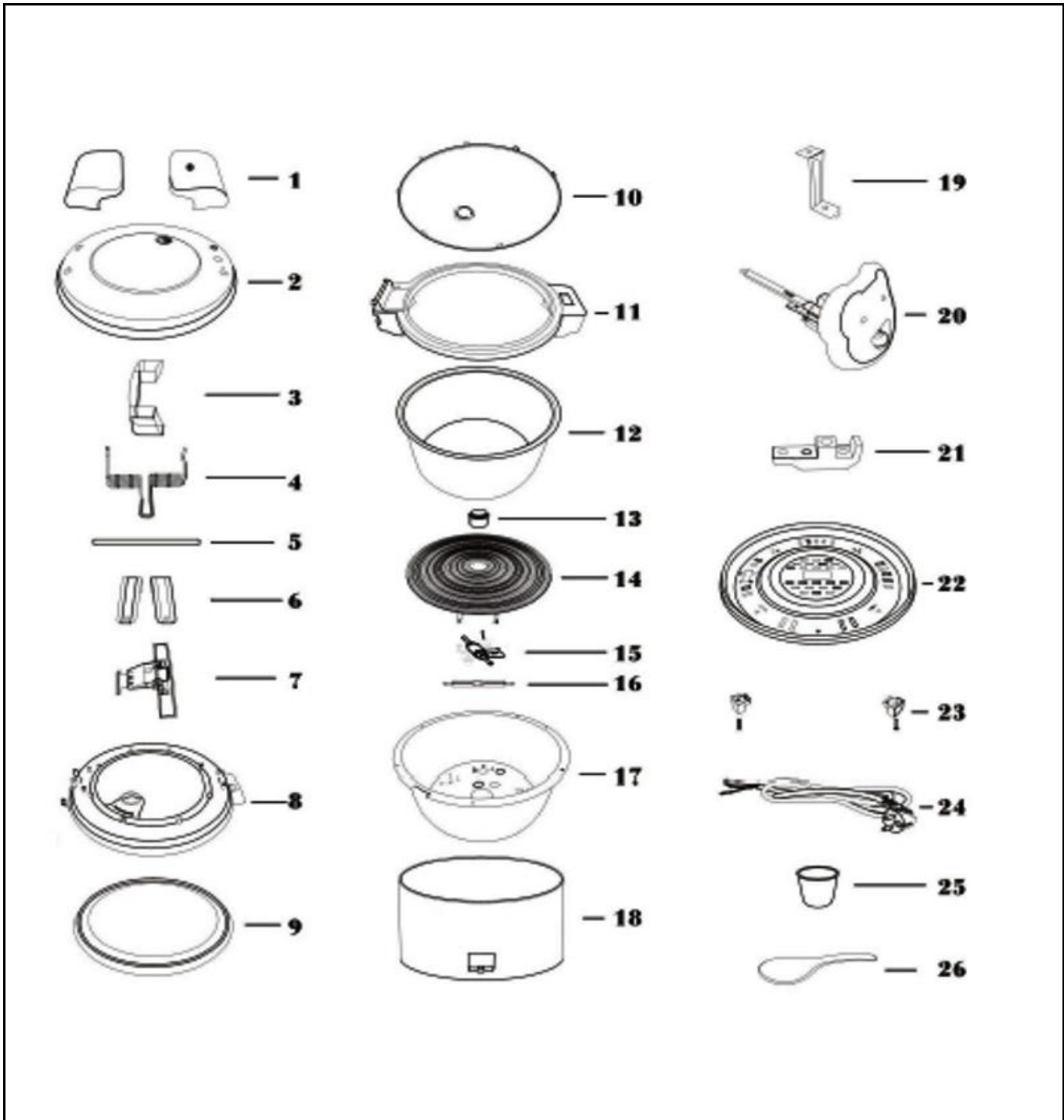



Drawing

 <b>HENDI</b> FOOD SERVICE EQUIPMENT <b>Hendi B.V.</b> Steenoven 21 3911 TX Rhenen The Netherlands	Batch #	Appliance part#
	202682 and up	240403
	Description	
	Rice cooker	

Date	17-09-2013	Revision #	Revision version
Revision	First bill of materials (BOM)		



### Bill of materials (BOM)

 <p><b>Hendi B.V.</b> Steenoven 21 3911 TX Rhenen The Netherlands</p>	<b>Batch #</b>	<b>Appliance part#</b>
	202682 and up	<b>240403</b>
	<b>Description</b>	
	<b>Rice cooker</b>	


<b>Date</b>	17-09-2013	<b>Revision #</b>	Revision version
<b>Revision</b>	First bill of materials (BOM)		

Item	Description	Part#	Quantity	Remark	Picture
1	Handle left/right	n/a	2		
2	Lid	n/a	1		
3	Bracket handle	n/a	1		
4	Spring	n/a	1		
5	Hinge pin	n/a	1		
6	Spring bracket	n/a	1		
7	Lock	n/a	1		
8	Plastic bracket	n/a	1		
9	Silicone gasket	931356	1		
10	Aluminium cover	n/a	1		
11	Plastic ring	n/a	1		
12	Aluminum pot	931363	1		
13	Thermo switch (magnetic)	931370	1		
14	Heating element	931387	1		
15	Reed switch	931394	1		
16	Thermal fuse	931400	1		
17	Inner housing	n/a	1		
18	Housing	n/a	1		
19	Bracket	n/a	3		
20	Switch	931417	1		
21	Terminal	n/a	1		
22	Bottom cover	n/a	1		
23	Feet	n/a	4		
24	Powercord	931424	1		
25	Measuring cup	931431	1		
26	Spoon	n/a	1		
*	Silicone round mat	930830	1	(not shown on exploded view)	

n/a -> not available

nss -> not sold separately

**Circuit diagram**

 <b>HENDI</b> FOOD SERVICE EQUIPMENT <b>Hendi B.V.</b> Steenoven 21 3911 TX Rhenen The Netherlands	<b>Batch #</b>	<b>Appliance part#</b>
	202682 and up	<b>240403</b>
	<b>Description</b>	
	Rice cooker	

<b>Date</b>	17-09-2013	<b>Revision #</b>	Revision version
<b>Revision</b>	First bill of materials (BOM)		

