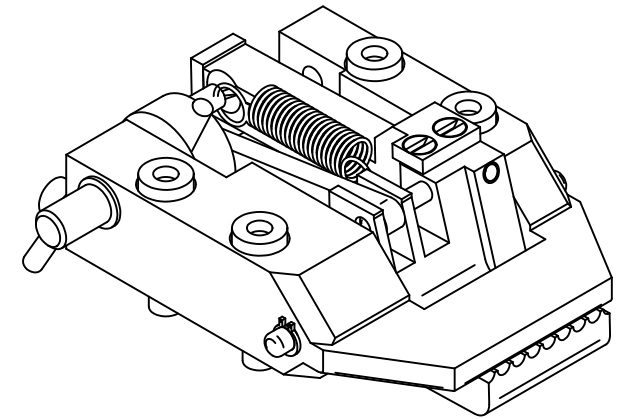
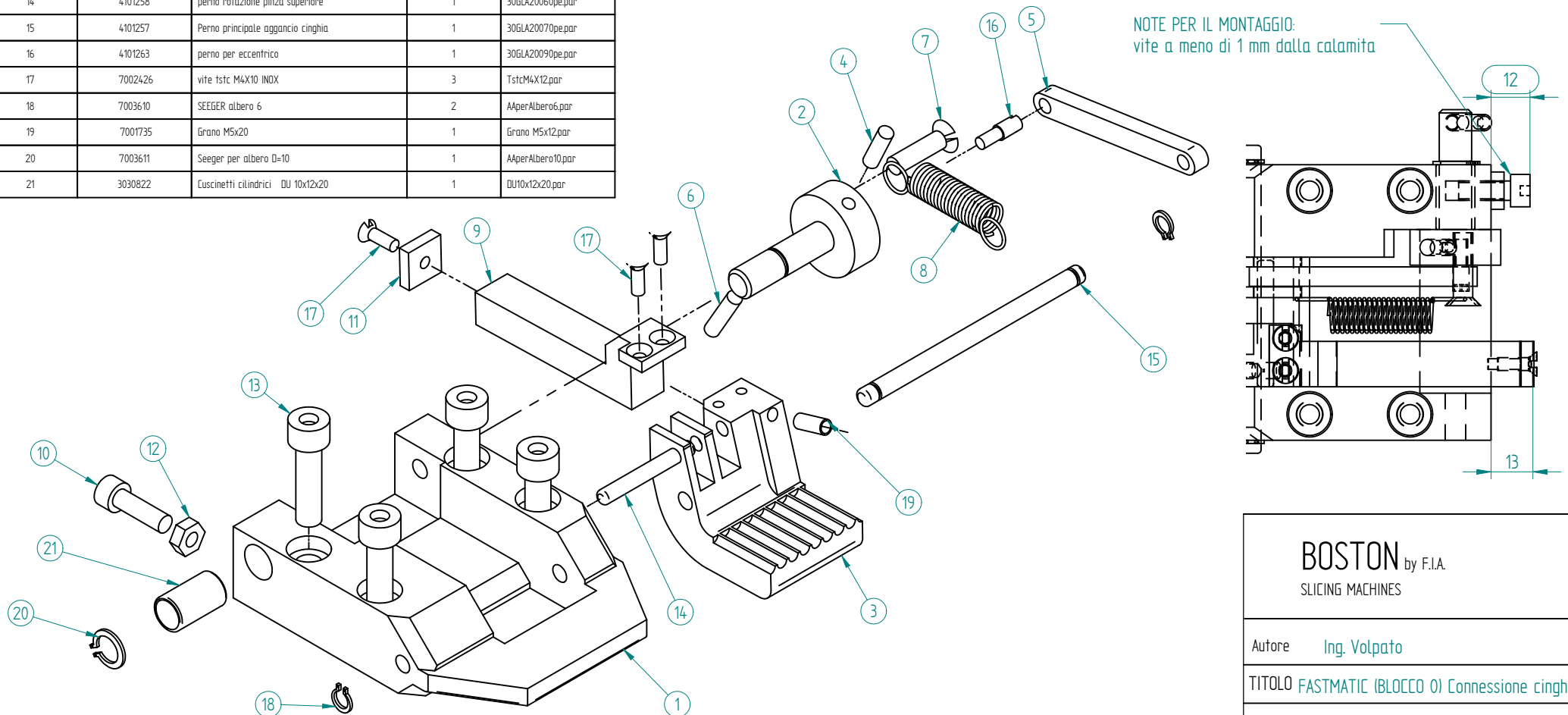


Numero oggetto	Codice	Titolo (BLOCCO 0)	Quantità	Nome file
1	4101254	base aggancio cinghia	1	30GLA20010Blo.par
2	4101262	PERNO eccentrico	1	30GLA20040Per.par
3	4101255	Pinza chiusura cinghia inferiore	1	30GLA20020pa.par
4	7001737	Grano M5x16	1	Grano M5x16.par
5	4101259	Asta rinvio aggancio cinghia	1	30GLA20030As.par
6	7001748	Grano M5x20	1	Grano M5x20.par
7	700134b	vite tstc M6x30	1	TstcM6x20.par
8	3031236	Molla a trazione	1	30glo50150Molla.par
9	4101256	Staffa calamita proximity di home	1	30GLA20050St.par
10	7003337	vite tcei M6*20	1	TcEiM6x20.par
11	da 3040162	GOMMA MAGNETICA sp. 4 MM (proximity)	1	Calamita.par
12	7000462	dado M6 basso	1	dadoM6Basso.par
13	700334A	vite tcei M8x30	4	TcEiM8x30.par
14	4101258	perno rotazione pinza superiore	1	30GLA20060pe.par
15	4101257	Perno principale aggancio cinghia	1	30GLA20070pe.par
16	4101263	perno per eccentrico	1	30GLA20090pe.par
17	7002426	vite tstc M4x10 INDX	3	TstcM4x12.par
18	7003610	SEEGER albero 6	2	AAperAlbero6.par
19	7001735	Grano M5x20	1	Grano M5x12.par
20	7003611	Seeger per albero Ø=10	1	AAperAlbero10.par
21	3030822	Cuscinetti cilindrici DU 10x12x20	1	DU10x12x20.par



NOTE PER IL MONTAGGIO:  
vite a meno di 1 mm dalla calamita

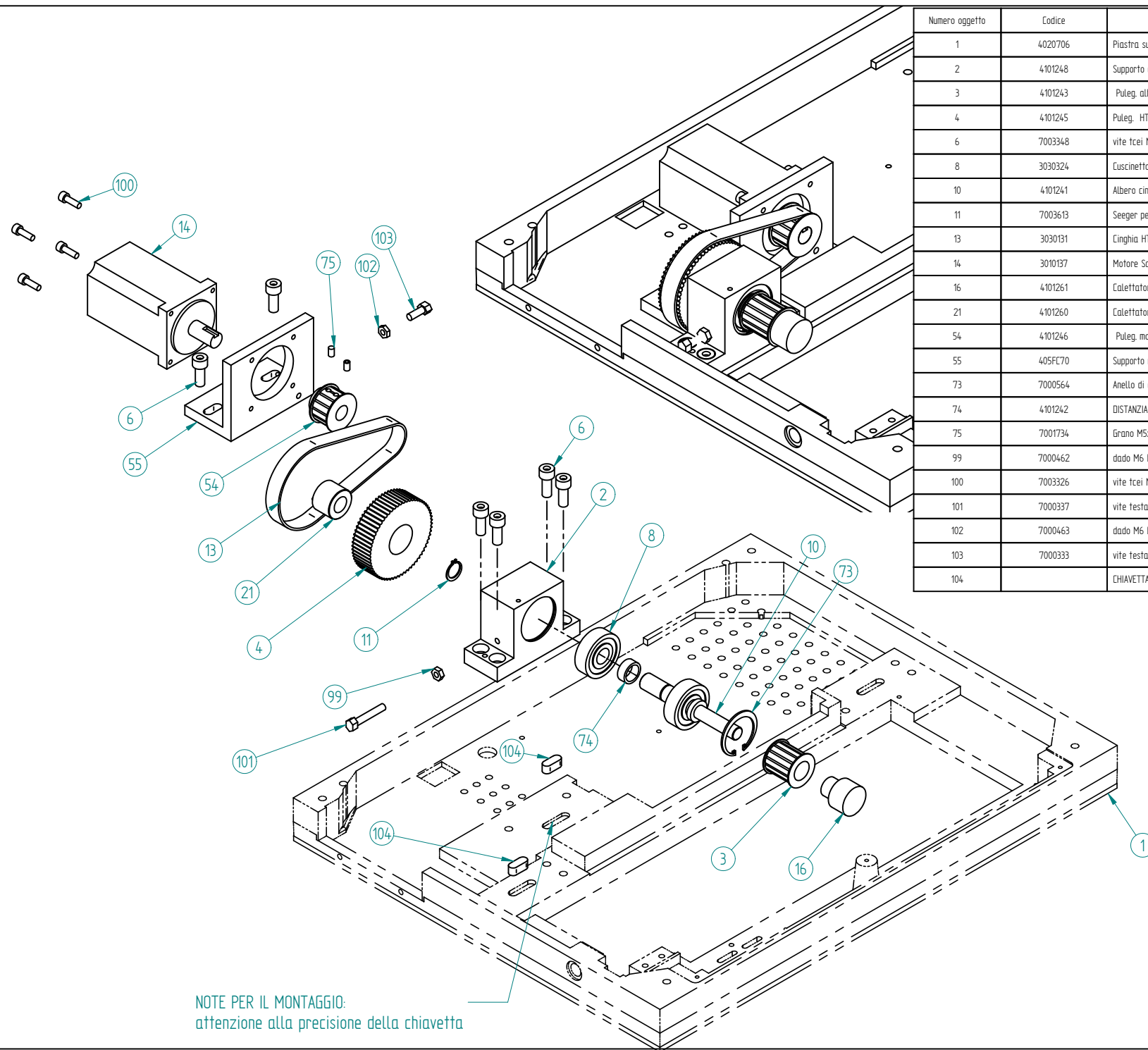


**BOSTON** by F.I.A.  
SLICING MACHINES

Autore Ing. Volpato

TITOLO FASTMATIC (BLOCCO 0) Connessione cinghia

Date 01/03/2005



Numero oggetto	Codice	Titolo ( BLOCCO 1)	Quantità	Nome file
1	4020706	Piastra supporto automatismo	1	30GLA10010.par
2	4101248	Supporto cuscinetti alb. principale	1	30GLA10020sup.par
3	4101243	Puleg. alb. princ. HTD18-5M-25	1	30GLA10140_pu.par
4	4101245	Puleg. HTD 48-5M-15	1	30GLA10110_pu.par
6	7003348	vite tcei M8X20	6	TCEIM8x20.par
8	3030324	Cuscinetto 6302 d15 d42	2	CUS6302.par
10	4101241	Albero cinghia	1	30GLA10060alb.par
11	7003613	Seeger per albero 15	1	AAperAlbero15.par
13	3030131	Cinghia HTD 375-5M-15	1	Htd 375-5M_2.par
14	3010137	Motore Sanyo 200 W AC220V (Lfili=650 mm)	1	R7MA20030.par
16	4101261	Calettatore RCK 80 d12 xD18 L1=14	1	RCK80d12D18.par
21	4101260	Calettatore RCK 61 d15 D28 L= 20	1	RCK61d14D26.par
54	4101246	Puleg. motore HTD20-5M-15 Dp=31 mm	1	30GLA10170_pu.par
55	405FC70	Supporto motore brushless Sanyo	1	30GLA10130SuMo.par
73	7000564	Anello di arresto per f. 42	1	AAPERFOR042.par
74	4101242	DISTANZIALE CUSC. AUTOMATISMO	1	30GLA10100_DC.par
75	7001734	Grano M5x8	2	Grano M5x8.par
99	7000462	dado M6 basso	1	dadoM6Basso.par
100	7003326	vite tcei M5x16	4	TCEIM5x16.par
101	7000337	vite testa esagonale M6x35	1	TcM6x35.par
102	7000463	dado M6 basso (altezza 3 mm)	1	dadoM6BAssisimo.par
103	7000333	vite testa esagonale M6x316	1	TEM6x16.par
104		CHIAVETTA 8X8X20	2	CHIAVETTA_8.par

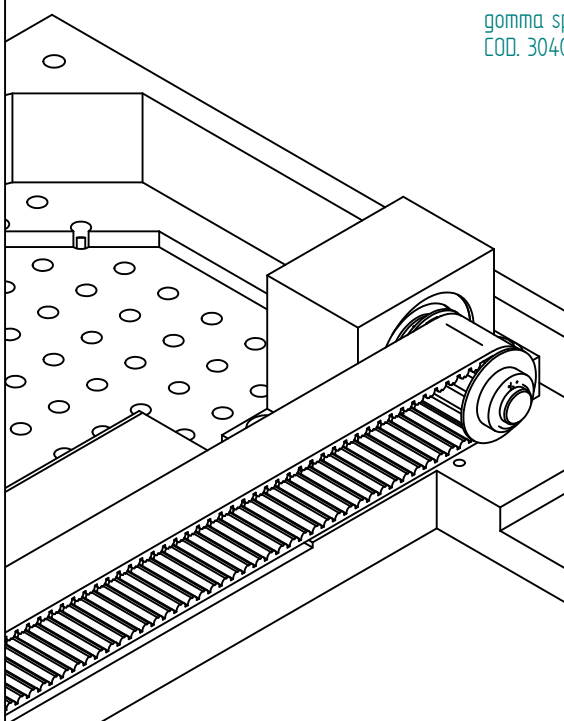
**BOSTON** by F.I.A.  
SLICING MACHINES

Autore **Marco Ing. Volpato**

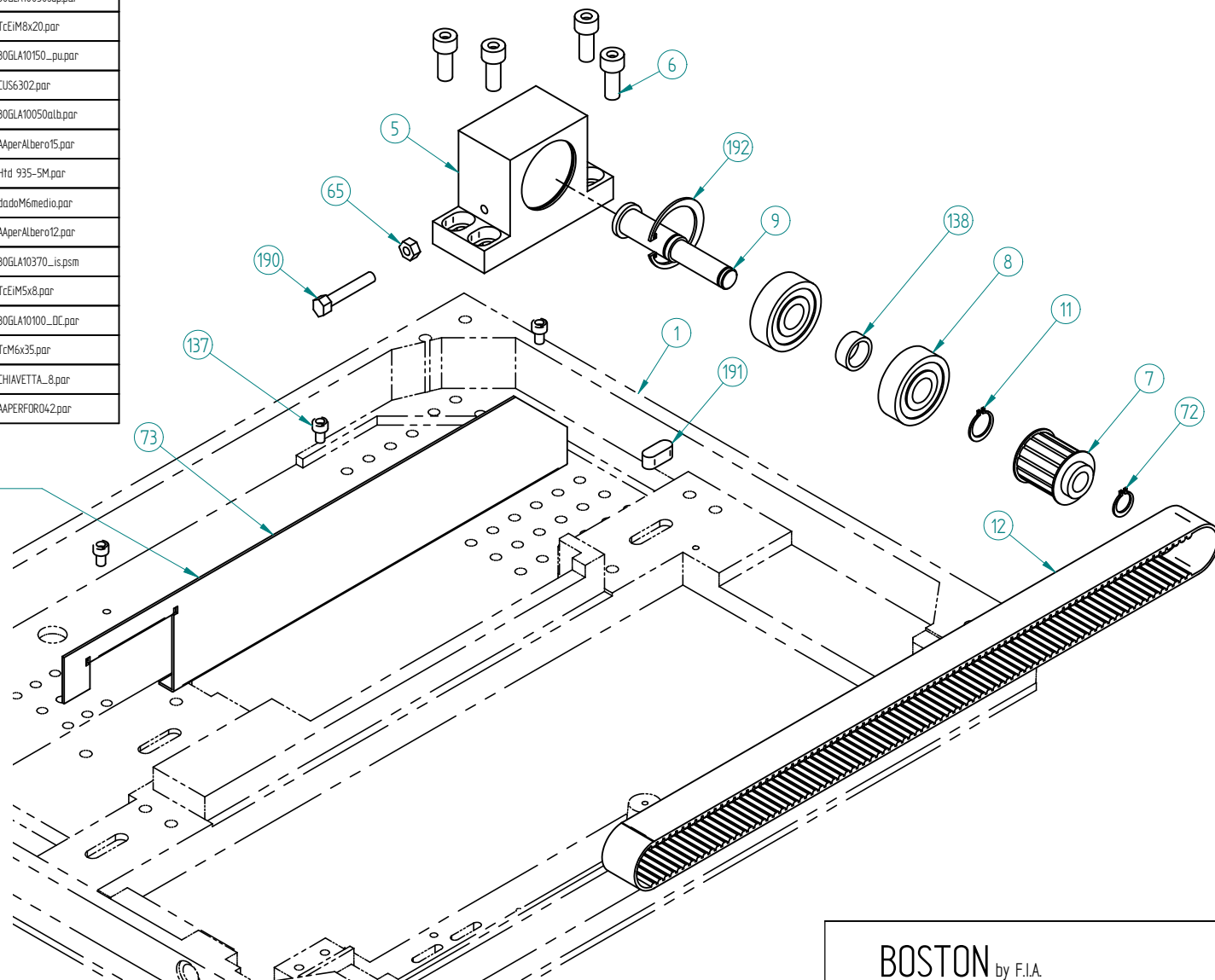
TITOLO **FASTMATIC ( BLOCCO1) ALBERO PRINCIPALE**

Date **20/04/2005**

Numero oggetto	Codice	Titolo ( BLOCCO 2 )	Quantità	Nome file
1	4020706	Piastra supporto automatismo	1	30GLA10010.par
5	4101247	supporto cuscinetti puleggia rinvio	1	30GLA10030sup.par
6	7003348	vite tcei M8X20	4	TcEiM8x20.par
7	4101244	Puleg. albrinvio HTD18-5M-25 dp28 mm	1	30GLA10150_pu.par
8	3030324	Cuscinetto 6302 d15 d42	2	CUS6302.par
9	4101240	Albero rinvio cinghia	1	30GLA10050alb.par
11	7003613	Seeger per albero 15	1	AAperAlbero15.par
12	3030132	Cinghia RPP 935-5M-25	1	Htd_935-5M.par
65	7000462	dado M6 medio	1	dadoM6medio.par
72	7003612	Anello di arresto per albero 12	1	AAperAlbero12.par
73	405FC72	Lamiera isolante rumore	1	30GLA10370_is.psm
137	7003031	TCEI M5x8	3	TcEiM5x8.par
138	4101242	DISTANZIALE CUSC. AUTOMATISMO	1	30GLA10100_OC.par
190	7000337	vite testa esagonale M6x35	1	TcM6x35.par
191		CHIAVETTA 8X8X20	1	CHIAVETTA_8.par
192	7000564	Anello di arresto per f. 42	1	AAPERFOR042.par



gomma spugna isolante  
COD. 3040726



**BOSTON** by F.I.A.  
SLICING MACHINES

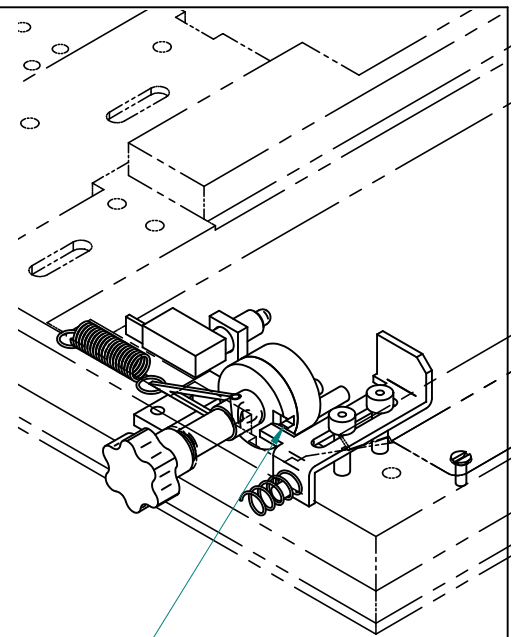
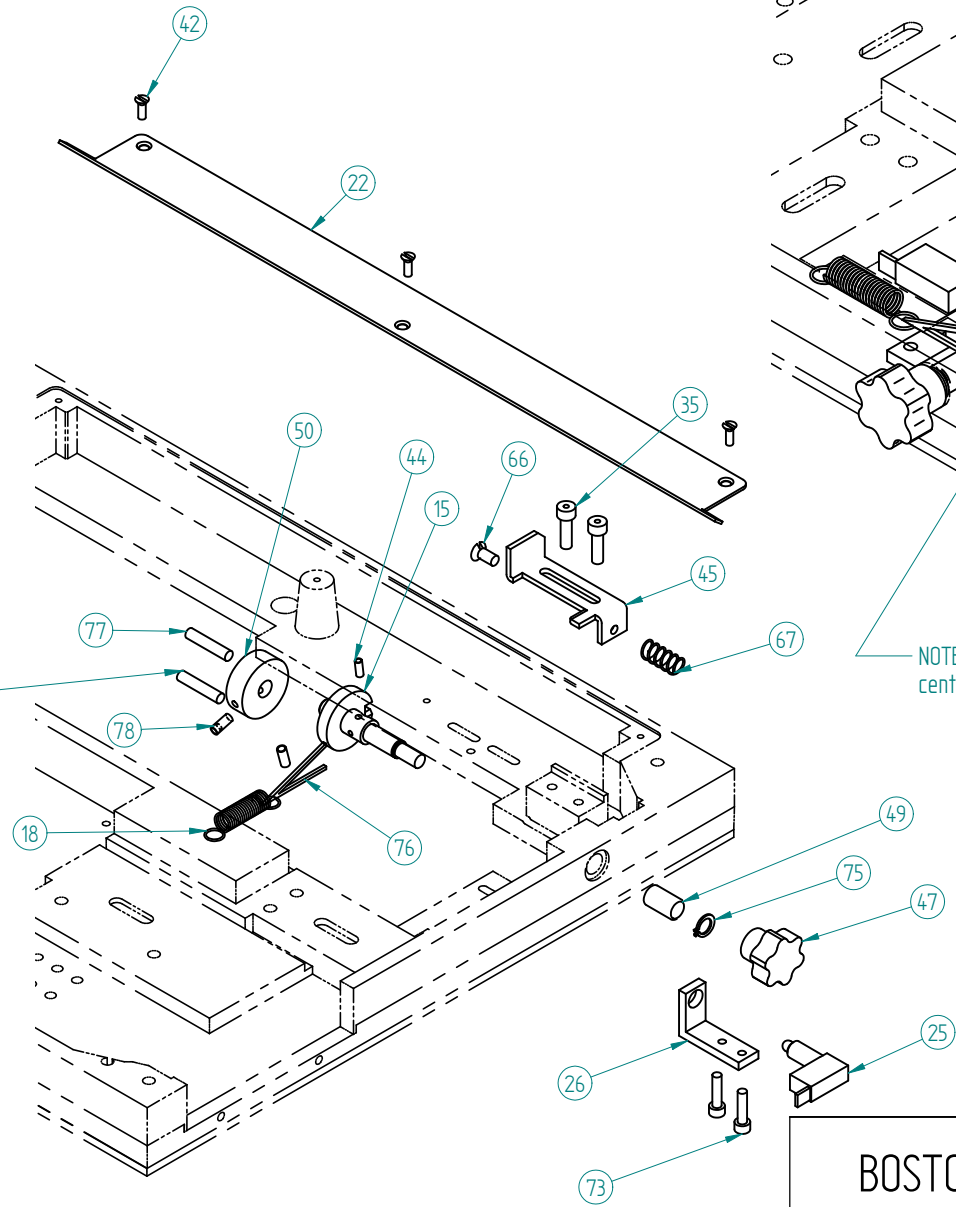
Autore **Marco Ing. Volpato**

TITOLO **FASTMATIC (BLOCCO 2) ALBERO RINVIO**

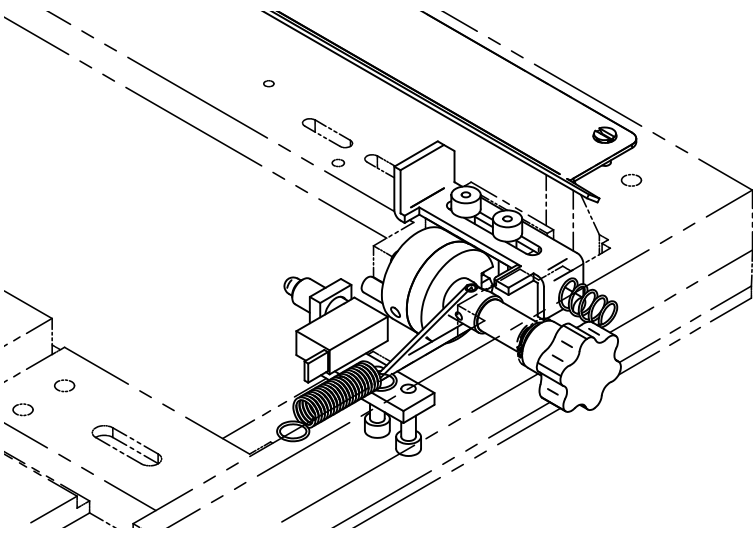
Date **20/04/2005**

Numero oggetto	Codice	Commenti	Quantità
15	4101249		1
18	3031236	spring	1
22	405FC73		1
25	3040212	microswitch	1
26	4101252		1
35	7003337	srew M6	2
42	7002426	srew M4x10	3
44	7003577	Stud M4	1
45	405FC71		1
47	4090302	Knob	1
49	3030822	TEFLON BUSHING	1
50	4101250		1
66	7001345	screw M6x15	1
67	3031204		1
73	7003328		2
75	7003611	Retaining Ring, External Ø10	1
76			1
77	7001749		2
78	7001735	Stud M5	2

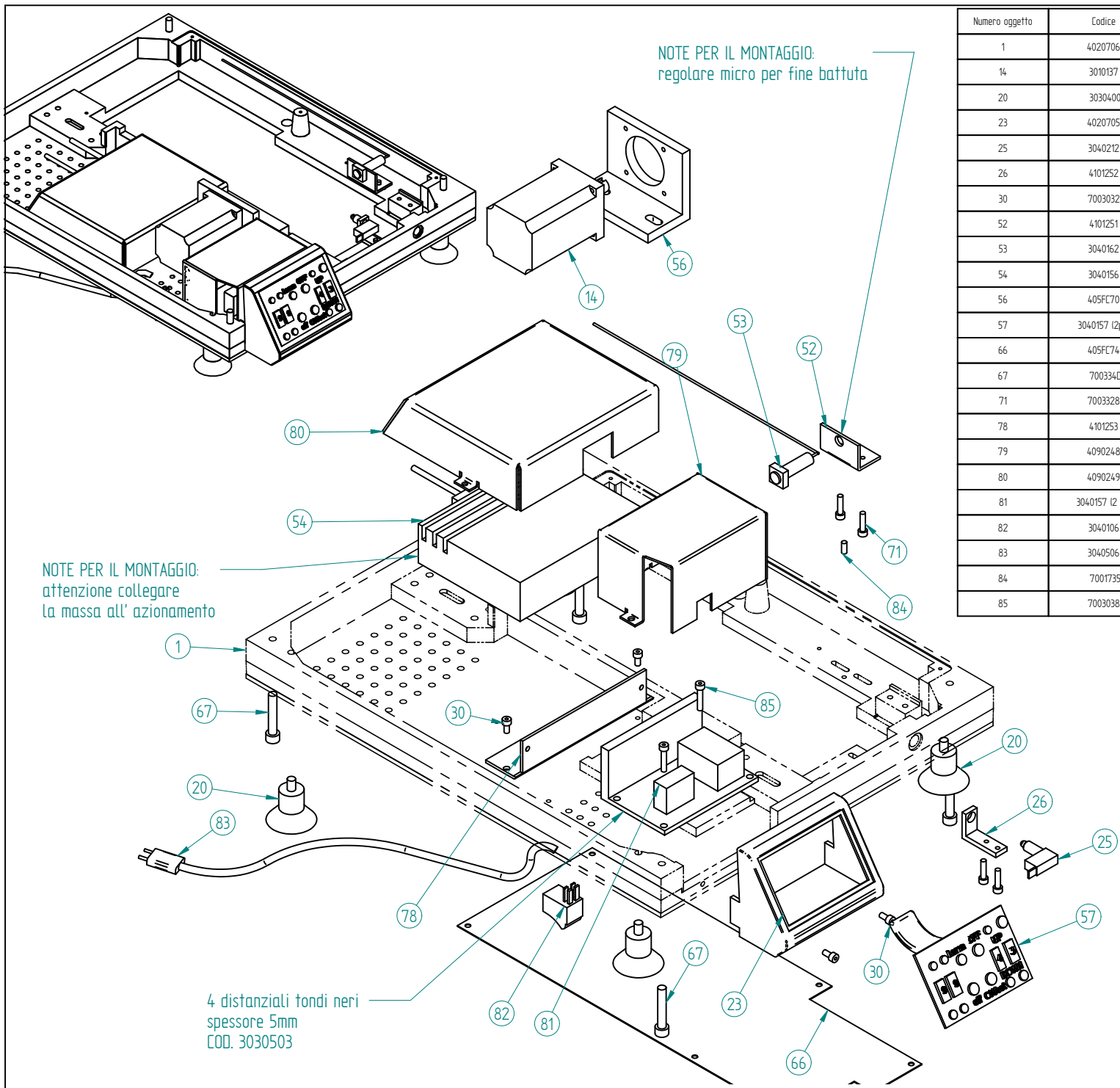
il grano esce dal supporto tondo di 20 mm



NOTE PER IL MONTAGGIO:  
centrare la cava con la piastrina



<b>BOSTON</b> by F.I.A. SLICING MACHINES	
Autore	Marco Ing. Volpato
TITOLO	FAST MATIC (BLOCCO 3) MAN/AUT.
Date	20/04/2005



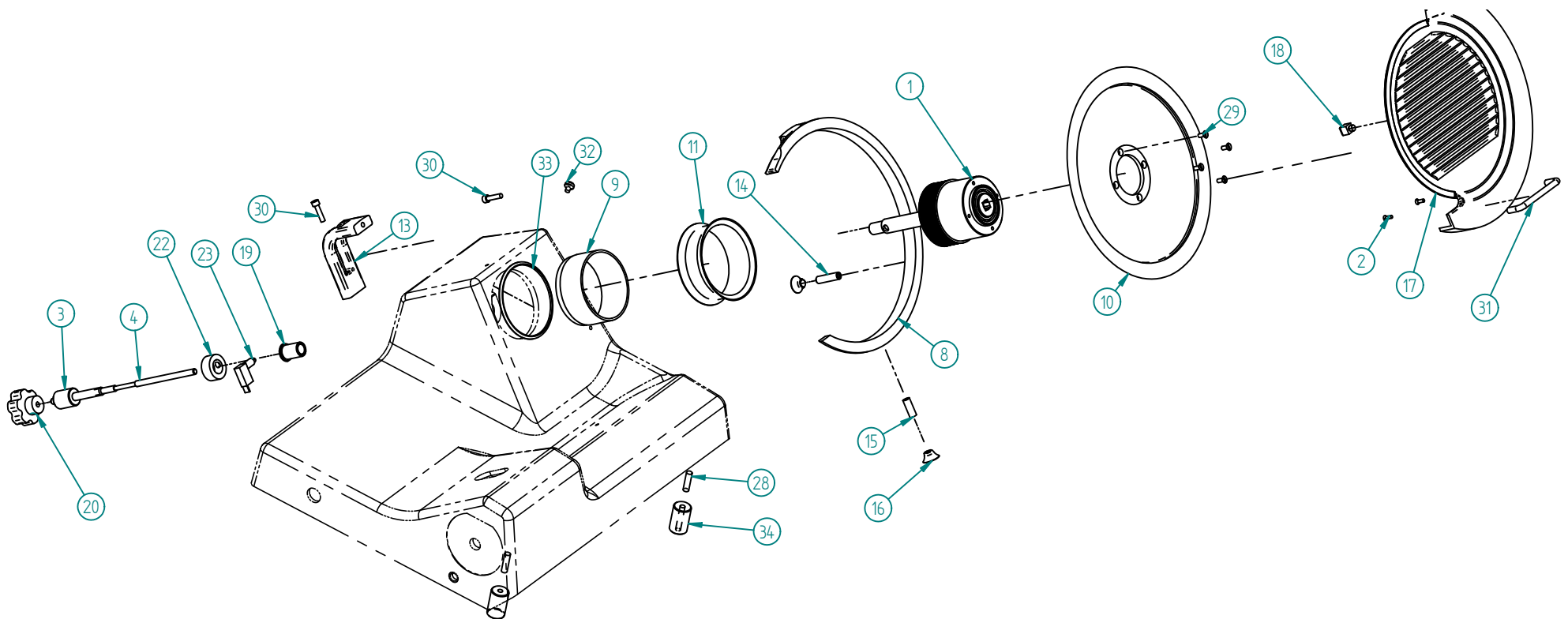
Numero oggetto	Codice	Titolo ( BLOCCO 4 )	Quantità	Nome file
1	4020706	Piastra supporto automatismo	1	30GLA10010.par
14	3010137	Motore Sanyo 200 W AC220V (L.fili=650 mm)	1	R7MA20030.par
20	3030400	Piedino	4	3030400Pied.par
23	4020705	Scatola Remote comandi	1	30GLA10160...sca.par
25	3040212	Microinterruttore	1	Micro.par
26	4101252	Supp.Micro Ext.corsa (angolare sp. 5)	1	30GLA10120SuMi.par
30	7003032	vite tcei M5*10	4	TceiM5x10.par
52	4101251	Supporto proximity (Ang. 30x30x3)	1	30GLA10400SuMi.psm
53	3040162	Proximity TIMIC 1010 P0150 (d=10) + calamita	1	proxM12x53.par
54	3040156	Azionamento sanyo 051A01AA	1	azionamento.par
56	405FC70	Supporto motore brushless Sanyo	1	30GLA10130SuMo.par
57	3040157 (2pz)	Pannello comandi (Logica /potenza)	1	pulsantiera.par
66	405FC74	Lamiera copertura fondo	1	30GLA10410Fondo.psm
67	7003340	vite tcei M8x45	4	TceiM8x45.par
71	7003328	vite tcei M5x20	4	TceiM5x20.par
78	4101253	Supporto azionamento (Ang. 40x40x3)	1	30GLA10380...SuAz.psm
79	4090248	scatola protezione logica/potenza	1	30GLA10430sca.psm
80	4090249	Scatola protezione azionamento	1	30GLA10420sca.psm
81	3040157 (2 pz)	logica/potenza	1	Logica...potenza.par
82	3040106	interruttore luminoso rosso	1	interruttore.par
83	3040506	cavo alimentazione 220V SCHUKO	1	Cavo_alimentazio.par
84	7001735	Grano M5x20	1	Grano M5x20.par
85	7003038	vite tcei M5x25	2	TceiM5x25.par

**BOSTON** by F.I.A.  
SLICING MACHINES

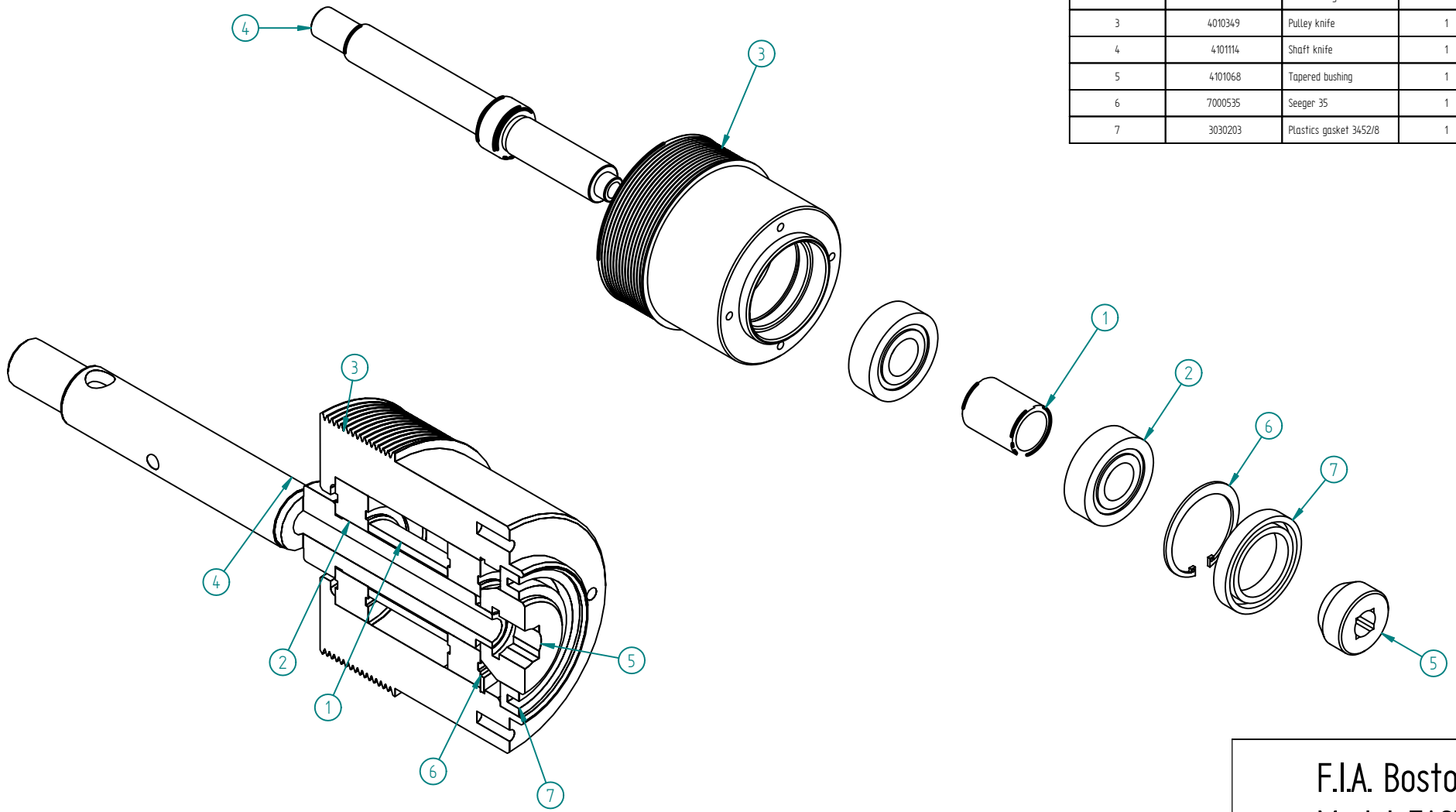
Autore **Marco Ing. Volpato**

TITOLO **FASTMATIC (BLOCCO 4) IMPIANTO ELETTRICO**

Date **20/04/2005**



Ref #	Part #	Description	Quantity
1	4100153	Spacer ball bearing	1
2	3030306	Ball bearing 6204 2rs	2
3	4010349	Pulley knife	1
4	4101114	Shaft knife	1
5	4101068	Tapered bushing	1
6	7000535	Seeger 35	1
7	3030203	Plastics gasket 3452/8	1

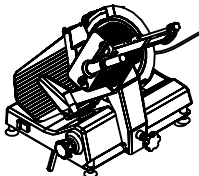


F.I.A. Boston  
Model FAST

Block: BLOCK 201

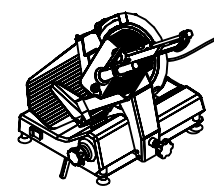
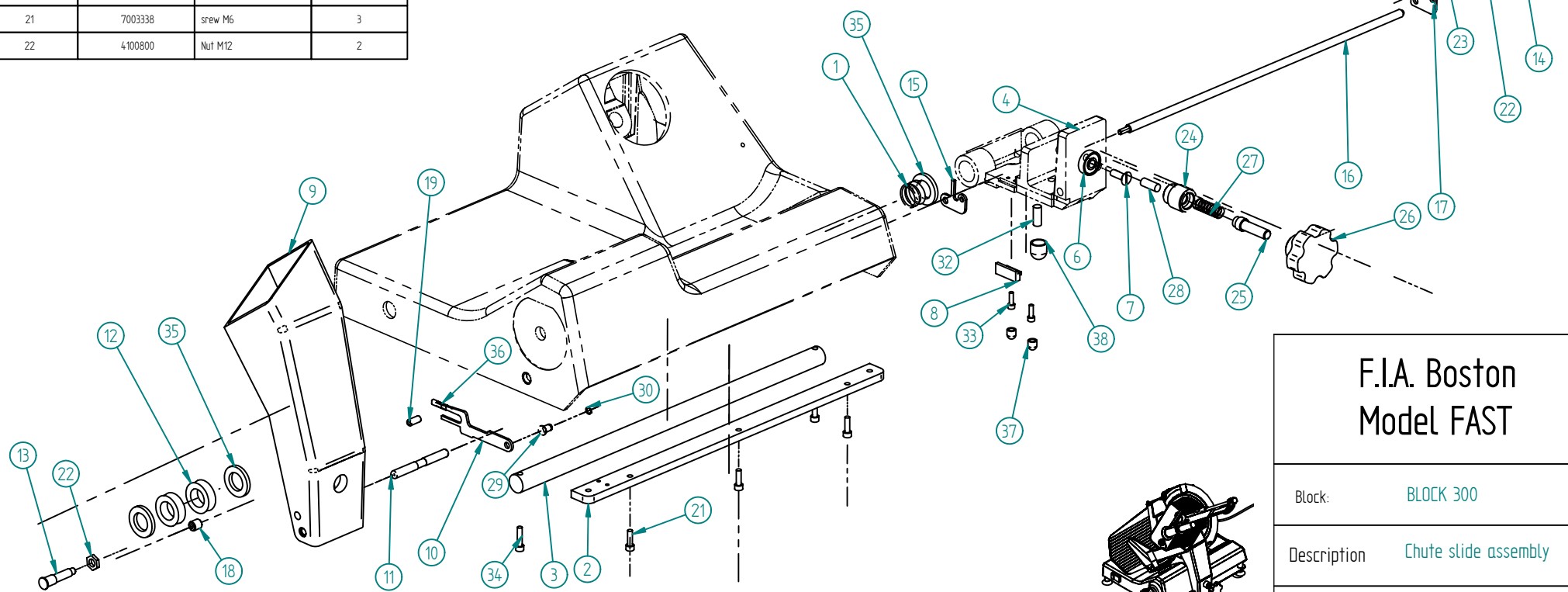
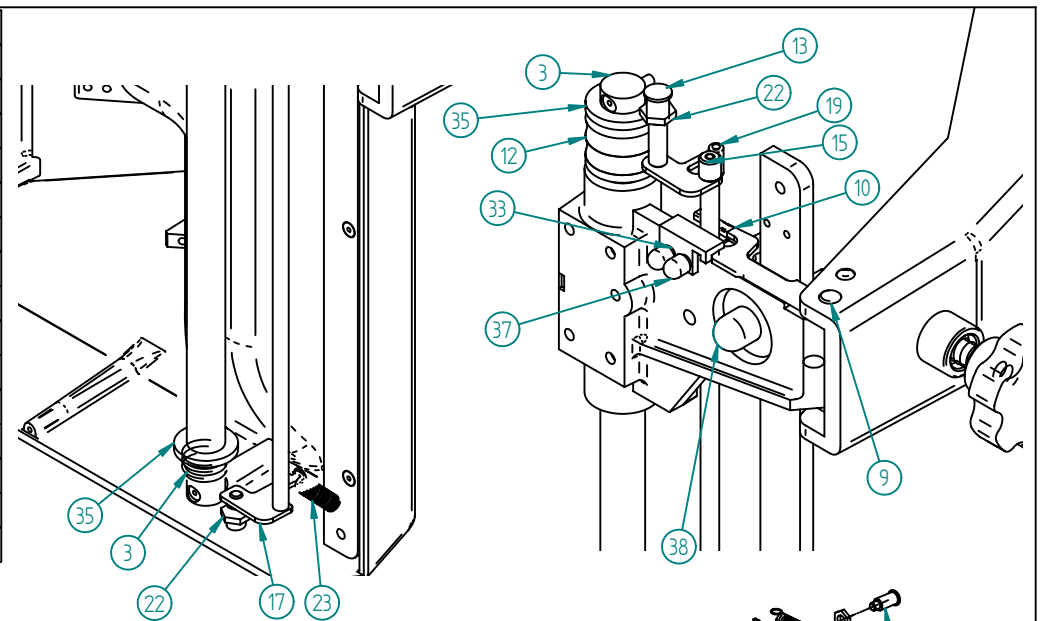
Description Hub assembly

Date 30/07/2004



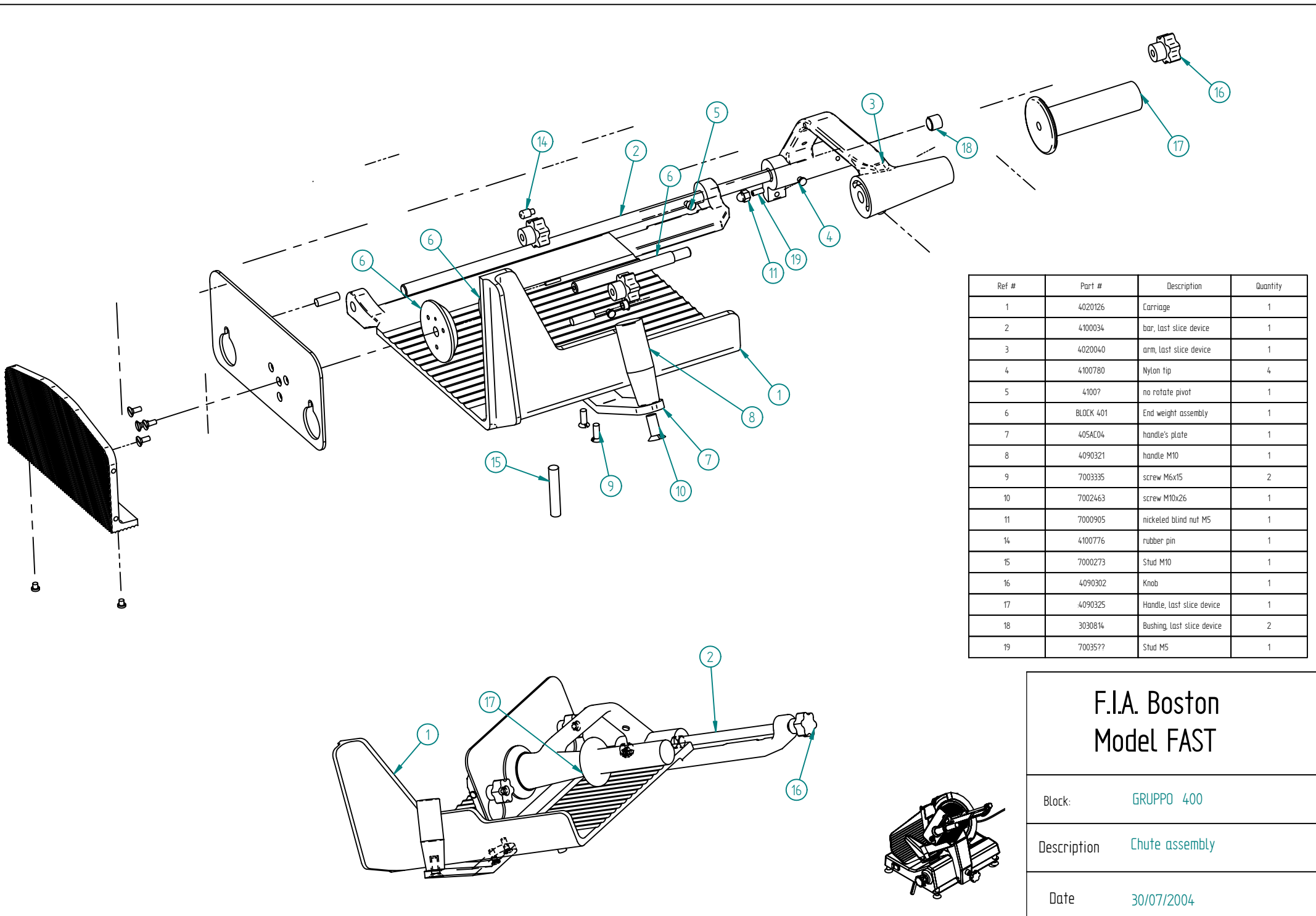


Ref #	Part #	Description	Quantity	Ref #	Part #	Description	Quantity
1	3031235	spring	1	23	3031266	spring 2	1
2	4070309	Slide carriage	1	24	4100086	Arm's bush	1
3	4070209	Bar carriage slide	1	25	4101035	Arm 's pivot	1
4	4010043	Support carriage arm	1	26	4020305	Knob	1
6	3030323	Bearing nylon	1	27	3031223	Spring	1
7	7001357	srew M8	1	28	7001769	Stud M10	1
8	405CB24	Block's barring gear	1	29	4100866	Blocking's pivot	1
9	4020052	Carriage arm	1	30	7003608	Seeger, circlip	1
10	405FC10	barring gear plate	1	32	4100195	Stud	1
11	4100253	Arm 's pivot	1	33	7003035	srew M5	2
12	3030502	Rubber washer	2	34	7003339	srew M6	2
13	4100872	Shaft bar	1	35	3030504	rubber washer	3
14	4100870	Shaft bar	1	36	3040710	rubber	1
15	405FC08	Blocking's plate	1	37	3031335	Cap screw	2
16	4100032	Blocking's bar	1	38	3031328	Cap screw	1
17	405FC06	Blocking's plate	1				
18	4100860	Blocking's bush	1				
19	4100332	Pivot	1				
21	7003338	srew M6	3				
22	4100800	Nut M12	2				



<b>F.I.A. Boston Model FAST</b>	
Block:	BLOCK 300
Description	Chute slide assembly
Date	03/08/2004





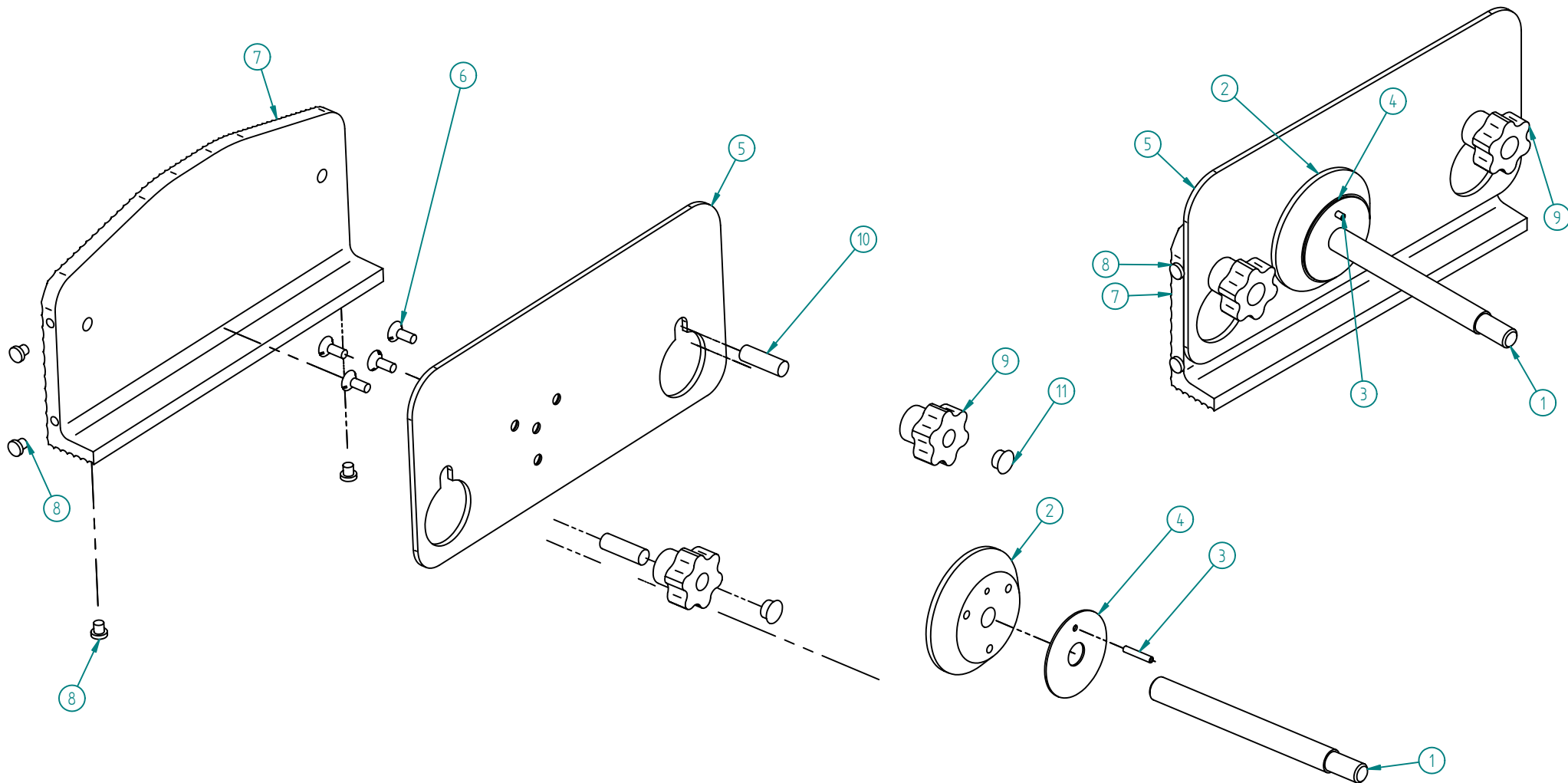
Ref #	Part #	Description	Quantity
1	4020126	Carriage	1
2	4100034	bar, last slice device	1
3	4020040	arm, last slice device	1
4	4100780	Nylon tip	4
5	41007	no rotate pivot	1
6	BLOCK 401	End weight assembly	1
7	405AC04	handle's plate	1
8	4090321	handle M10	1
9	7003335	screw M6x15	2
10	7002463	screw M10x26	1
11	7000905	nickeled blind nut M5	1
14	4100776	rubber pin	1
15	7000273	Stud M10	1
16	4090302	Knob	1
17	4090325	Handle, last slice device	1
18	3030814	Bushing last slice device	2
19	70035??	Stud M5	1

**F.I.A. Boston  
Model FAST**

Block: GRUPPO 400

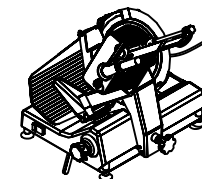
Description Chute assembly

Date 30/07/2004

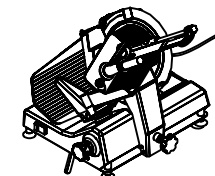
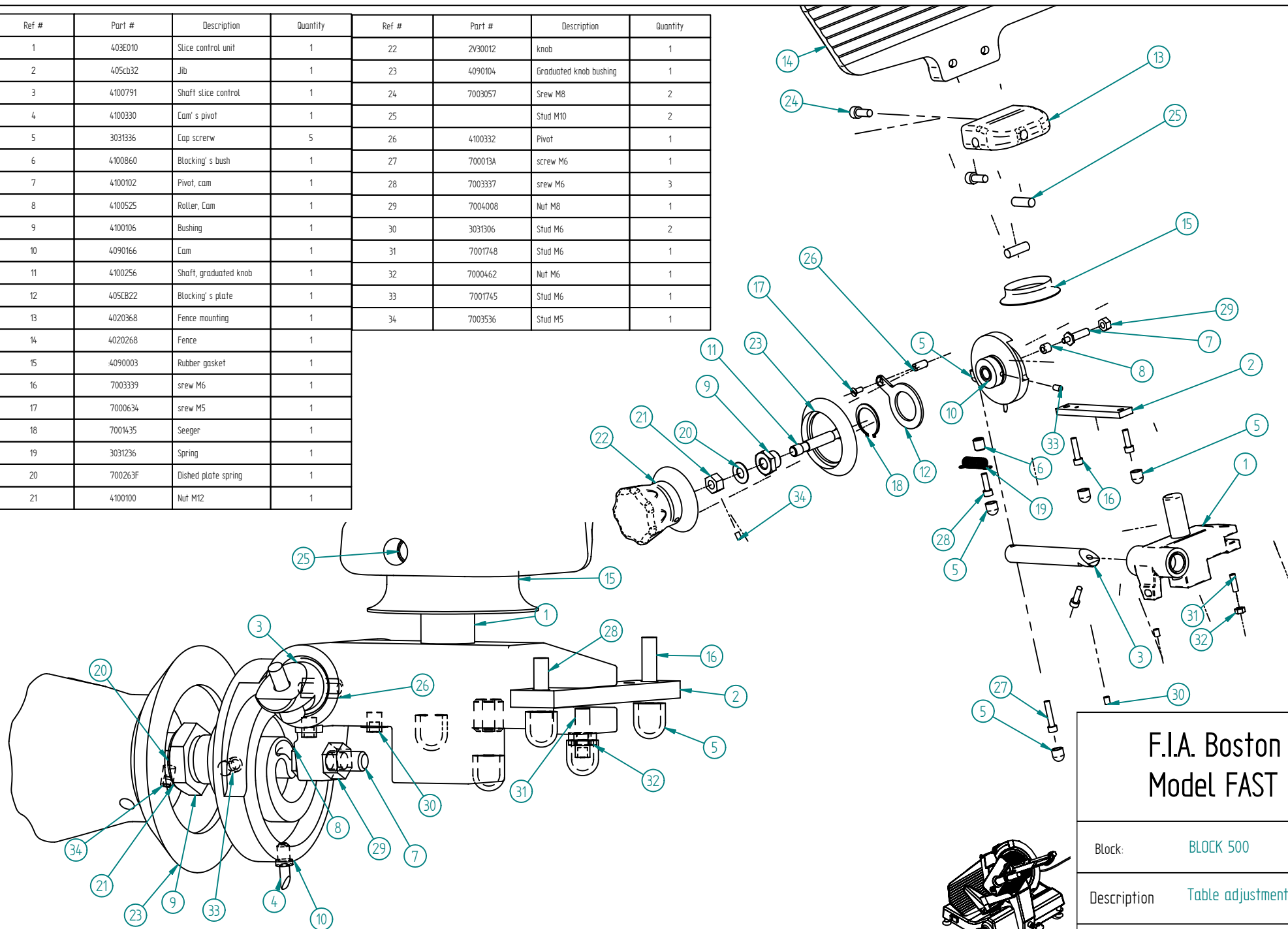


Ref #	Part #	Description	Quantity
1	4100862	Shaft, last slice device	1
2	406AD03	Spacer, last slice device	1
3	7002749	pin	1
4	4100919	nylon washer	1
5	405FC12	Protection plate	1
6	7000634	Screw M5	4
7	4020282	last slice device	1
8	4100780	Nylon tip	4
9	4090361	Knob	2
10	7001759	stud M8x25	2
11	3040125	Stopper	2

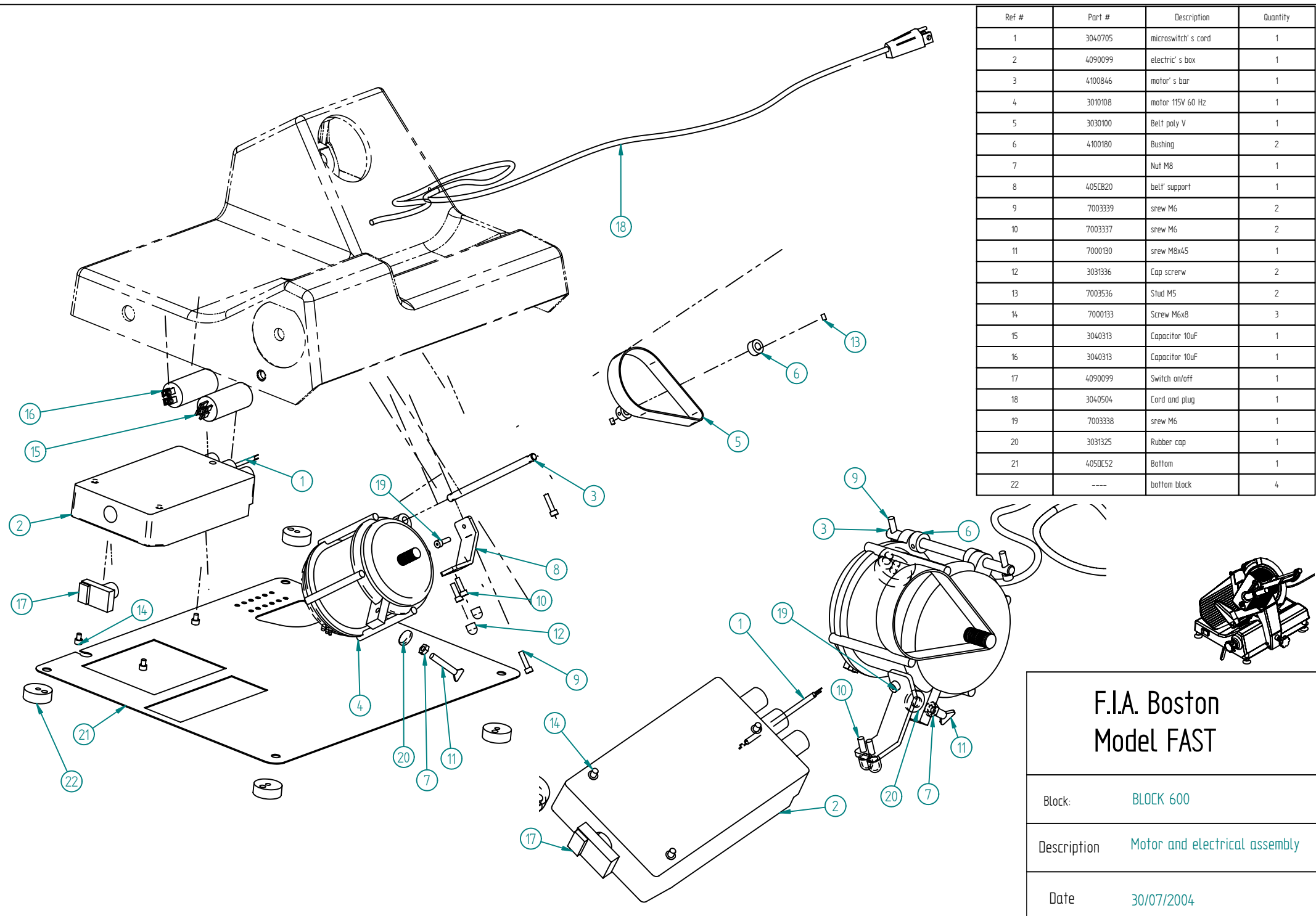
<b>F.I.A. Boston Model FAST</b>	
Block:	BLOCK 401
Description	End weight assembly
Date	30/07/2004



Ref #	Part #	Description	Quantity	Ref #	Part #	Description	Quantity
1	403E010	Slice control unit	1	22	2V30012	knob	1
2	405cb32	Jib	1	23	4090104	Graduated knob bushing	1
3	4100791	Shaft slice control	1	24	7003057	Srew M8	2
4	4100330	Cam' s pivot	1	25		Stud M10	2
5	3031336	Cap screw	5	26	4100332	Pivot	1
6	4100860	Blocking' s bush	1	27	700013A	screw M6	1
7	4100102	Pivot, cam	1	28	7003337	srew M6	3
8	4100525	Roller, Cam	1	29	7004008	Nuf M8	1
9	4100106	Bushing	1	30	3031306	Stud M6	2
10	4090166	Cam	1	31	7001748	Stud M6	1
11	4100256	Shaft, graduated knob	1	32	7000462	Nuf M6	1
12	405CB22	Blocking' s plate	1	33	7001745	Stud M6	1
13	4020368	Fence mounting	1	34	7003536	Stud M5	1
14	4020268	Fence	1				
15	4090003	Rubber gasket	1				
16	7003339	srew M6	1				
17	7000634	srew M5	1				
18	7001435	Seeger	1				
19	3031236	Spring	1				
20	700263F	Dished plate spring	1				
21	4100100	Nuf M12	1				



<b>F.I.A. Boston Model FAST</b>	
Block:	BLOCK 500
Description	Table adjustment assembly
Date	30/07/2004



Ref #	Part #	Description	Quantity
1	3040705	microswitch' s cord	1
2	4090099	electric' s box	1
3	4100846	motor' s bar	1
4	3010108	motor 115V 60 Hz	1
5	3030100	Belt poly V	1
6	4100180	Bushing	2
7		Nut M8	1
8	405CB20	belt' s support	1
9	7003339	srew M6	2
10	7003337	srew M6	2
11	7000130	srew M8x45	1
12	3031336	Cap screww	2
13	7003536	Stud M5	2
14	7000133	Screw M6x8	3
15	3040313	Capacitor 10uF	1
16	3040313	Capacitor 10uF	1
17	4090099	Switch on/off	1
18	3040504	Cord and plug	1
19	7003338	srew M6	1
20	3031325	Rubber cap	1
21	405DC52	Bottom	1
22	----	bottom block	4

**F.I.A. Boston  
Model FAST**

Block: **BLOCK 600**

Description **Motor and electrical assembly**

Date **30/07/2004**